



COMPANY  
PROFILE  
**2022**

## About Aplite

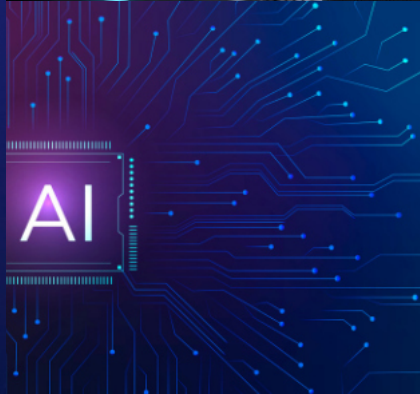
As your **business** depends on good people as well as technology, **we are** here to make **technology** accomplish what you need at **its best**

Founded in 2014, Aplite Consulting has emerged as a leading solutions provider trusted by many businesses across Tanzania.

Aplite Consulting has significant experience across industry sectors, products and services, with substantial work done in providing professional services, infrastructure solutions, technical support, and technology outsourcing to all sectors. Key clients have ranged from banking and financial services, telecommunications, manufacturing, government, and NGOS.

Working with a team of highly skilled technicians with skills cutting across all facets of technology, we endeavor to ensure that we assist all our customers meet their IT milestones with the bigger target of reaching the organization's Business requirements.





WE BELIEVE  
IN COMMON  
SENSE,  
COURAGE AND  
CHEMISTRY

“The meeting of two personalities is like the contact of two chemical substances: if there is any reaction, both are transformed” - **Carl Jung**



## OUR MISSION

To accelerate advanced IT solutions adoption for government and enterprise organizations.



## OUR VISION

To be the leading IT solutions provider across Africa offering advanced business technology solutions to government and enterprise organizations.



## OUR VALUES

Promise to Customers. Creating a great customer experience that begins with staying true to the words we speak and the bonds we make.



## CEO Statement

We're your innovative, agile, and experienced technology and IT services partner in Tanzania

Our in-house consulting team work alongside our managed services, cloud and communications specialists to deliver a comprehensive range of ICT solutions and services.

But it's our commitment to brilliant outcomes that really makes us the partner of choice for so many organisations. We create enduring partnerships with all our clients which enable us to be your dynamic, agile and long-term technology partner. We're the people who take the time to understand your business, ensure we speak your language, and proactively work on your side.

**JOHN MAINA**

CEO Aplite Consulting.



**98%**

Rate Us With  
5 Out Of 5  
Starts, They Are  
Satisfied!



**83%**

Of Our New  
Clients Return  
With More Work  
for the next.



**Service** List

# WE ARE **PASSIONATE** AT WHAT WE DO

We are committed to providing our corporate and private clients with professional, robust, and affordable solutions that are the most appropriate for their individual needs. Client satisfaction and mutual trust form the backbone of our company, and a vast majority our clientele are originally gained through positive referrals.





## USER EXPERIENCE DEVICES

· Laptops, desktops, printers, scanners, shredders, · Access Control, fire and Safety devices, · CCTV Surveillance, Intrusion and Detection Systems

## DC NETWORK

Data Centre Switching · Data Centre Security · Software Defined Networking

## DC IT PLATFORMS

Compute platforms · Virtualization & emerging Platforms · Storage & Data Management · OS , Database & Middleware · Professional Services

## WAN & LAN

Wide Area Network Services  
· Local Area Network Services including cabling. · WIFI i& Collaboration  
· SD WAN

## CYBER SECURITY

Data Centre Security  
· Cyber Security  
· Database Security

## DC INFRASTRUCTURE

Wide Area Network Services  
· Local Area Network Services including cabling. · WIFI i& Collaboration  
· SD WAN

# OUR PROPOSITION **NON-IT DC INFRASTRUCTURE**

Non-IT DC Infra :-

- Data Centre Containers – Self contained data centre
- Data Centre Physical Infrastructure Services –racks, cabling, UPS, patch panels etc
- Data Centre Cooling – air and liquid cooling
- Data Centre Physical Security – access control and IP Surveillance



## **Professional services**

Design and Consultancy Professional Service, Implementation Professional Services and SLA Centric Professional Services





**PANDUIT**<sup>®</sup>

 **VERTIV**

**APC**<sup>®</sup>  
by Schneider Electric

 **suprema**

**ZKT***ECO*

  
**HUAWEI**

 **SIEMON**<sup>™</sup>

**HIKVISION**<sup>®</sup>

# OUR PROPOSITION **NETWORKING & SECURITY (DC, WAN & CAMPUS SOLUTIONS)**

## Data Centre Networks

- Data Centre Switching, Routing, Aggregation, SD Networking
- Data Centre Security –Perimeter and Data Centre Firewalls, WAF, Load Balancers, WAN optimization etc
- WAN Routing.
- Optimised WAN using Software Defined WAN (SD-WAN).
- Software Defined Access for the Campus and branch networks



## **Professional services**

Design and Consultancy Professional Service,  
Implementation Professional Services and SLA  
Centric Professional Services





# OUR PROPOSITION **DATA CENTER IT PLATFORMS**

## DC Platforms

- Compute Services -Servers and Blades
- Virtualization software
- Storage – block, object, file
- OS , Database & Middleware
- Back-up and archival



## **Professional services**

Design and Consultancy Professional Service,  
Implementation Professional Services and SLA  
Centric Professional Services





**DELL** EMC **vmware**

**VERITAS**

  
**Hewlett Packard  
Enterprise**

  
**HUAWEI**

  
**CISCO**

**veeam**

# OUR PROPOSITION **CYBER-SECURITY**

- Email Security
- Endpoint Security
- Network Access Control
- Identity and Access Management
- Security Information and Event Management
- L2 and L3 network encryptors
- Threat Intelligence, analysis including detection and prevention.
- Network Security and Forensics
- Cloud Access and Security Broke



## **Professional services**

Design and Consultancy Professional Service,  
Implementation Professional Services and SLA  
Centric Professional Services







**aruba**<sup>®</sup>  
ClearPass

**mimecast**<sup>®</sup>    **Forcepoint**

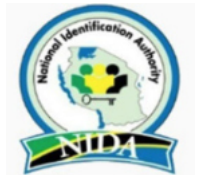
 **DARKTRACE**    **FORTINET**<sup>®</sup>     **CISCO**

**kaspersky**     **McAfee**     **Check Point**  
SOFTWARE TECHNOLOGIES LTD.

 **Symantec**     **FIREEYE**<sup>™</sup>     **TREND**  
MICRO<sup>™</sup>

**Our** Clients

WE AIM HIGH.  
BUT NEVER  
LOOK DOWN.





thank you for  
business with us.

**HQ Office**

1st Floor Plot No. 112 Lufungira Street along Sam Nujoma Rd

**P/F.** +255 719 547 333/ +255 22 277 4942 | **E.** sales@aplite.co.tz | www.aplite.co.tz